



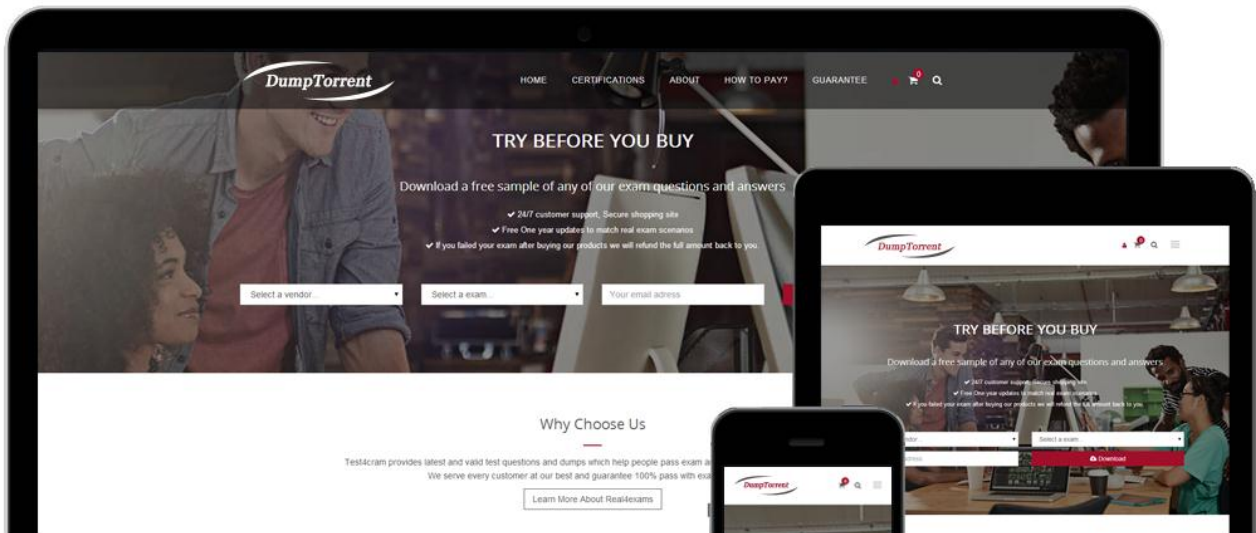
DumpTorrent

[HOME](#)
[CERTIFICATIONS](#)
[ABOUT](#)
[HOW TO PAY?](#)
[GUARANTEE](#)
[FAQ](#)

TRY BEFORE YOU BUY

Download a free sample of any of our exam questions and answers

- ✓ 24/7 customer support, Secure shopping site
- ✓ Free One year updates to match real exam scenarios
- ✓ If you failed your exam after buying our products we will refund the full amount back to you.



<p></p> <p>QUALITY AND VALUE</p> <p>ExamsTorrent Practice Exams are written to the highest standards of technical accuracy, using only certified subject matter experts and published authors for development - no all vce.</p>	<p></p> <p>TESTED AND APPROVED</p> <p>We are committed to the process of vendor and third party approvals. We believe professionals and executives alike deserve the confidence of quality coverage these authorizations provide.</p>	<p></p> <p>EASY TO PASS</p> <p>If you prepare for the exams using our ExamsTorrent testing engine, It is easy to succeed for all certifications in the first attempt. You don't have to deal with all dumps or any free torrent / rapidshare all stuff.</p>	<p></p> <p>TRY BEFORE BUY</p> <p>ExamsTorrent offers free demo of each product. You can check out the interface, question quality and usability of our practice exams before you decide to buy.</p>
--	--	--	--

<http://www.dumptorrent.com>

High-quality Exam Torrent & Valid Test Dumps & Reliable Guide Torrent

Exam : 1Z0-047

Title : Oracle Database SQL Expert

Vendors : Oracle

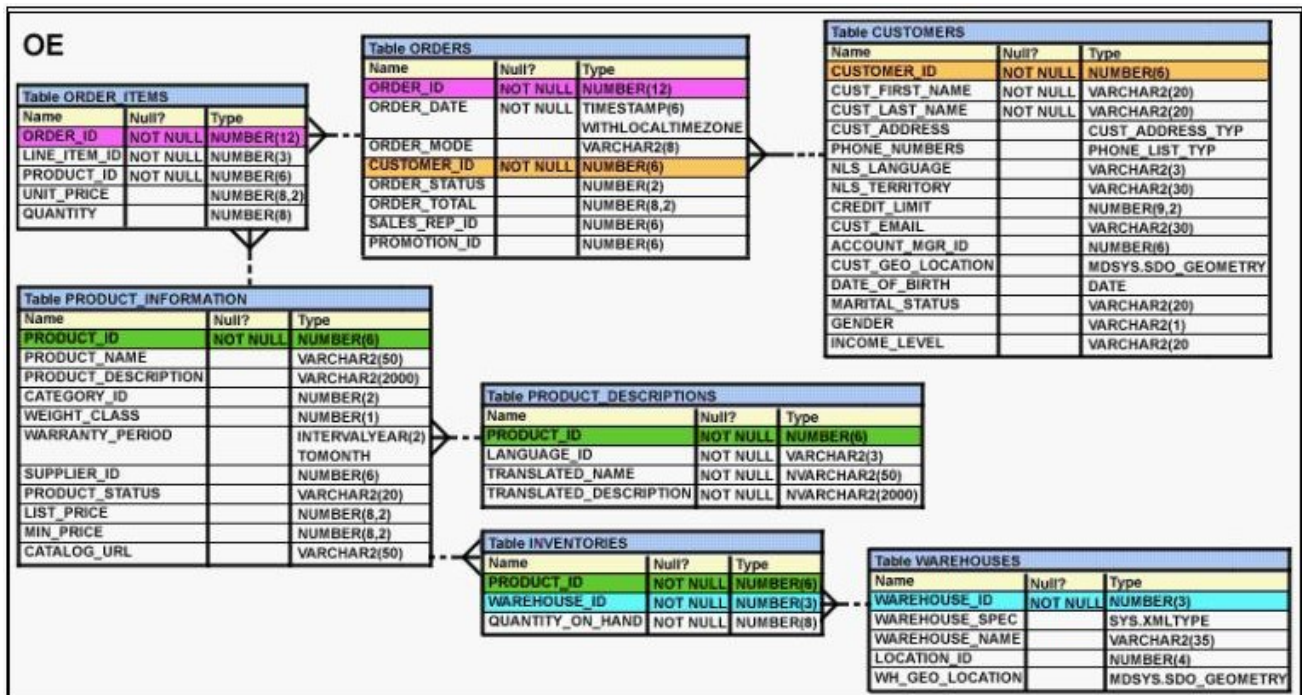
Version : DEMO

1.You need to load information about new customers from the NEW_CUST table into the tables CUST and CUST_SPECIAL. If a new customer has a credit limit greater than 10,000, then the details have to be inserted into CUST_SPECIAL. All new customer details have to be inserted into the CUST table. Which technique should be used to load the data most efficiently?

- A.external table
- B.the MERGE command
- C.the multitable INSERT command
- D.INSERT using WITH CHECK OPTION

Answer:C

2.View the Exhibit and examine the description of the CUSTOMERS table. You want to add a constraint on the CUST_FIRST_NAME column of the CUSTOMERS table so that the value inserted in the column does not have numbers. Which SQL statement would you use to accomplish the task?



- A.ALTER TABLE CUSTOMERS ADD CONSTRAINT cust_f_name CHECK(REGEXP_LIKE(cust_first_name,'^A-Z'))NOVALIDATE ;
- B.ALTER TABLE CUSTOMERS ADD CONSTRAINT cust_f_name CHECK(REGEXP_LIKE(cust_first_name,'^[0-9]'))NOVALIDATE ;
- C.ALTER TABLE CUSTOMERS ADD CONSTRAINT cust_f_name CHECK(REGEXP_LIKE(cust_first_name,'[[:alpha:]]'))NOVALIDATE ;
- D.ALTER TABLE CUSTOMERS ADD CONSTRAINT cust_f_name CHECK(REGEXP_LIKE(cust_first_name,'[[:digit:]]'))NOVALIDATE ;

Answer:C

3.Which three tasks can be performed using regular expression support in Oracle Database 10g? (Choose three.)

- A.It can be used to concatenate two strings.
- B.It can be used to find out the total length of the string.
- C.It can be used for string manipulation and searching operations.

- D.It can be used to format the output for a column or expression having string data.
E.It can be used to find and replace operations for a column or expression having string data.

Answer:C D E

4.View the Exhibit and examine the structure of the EMP table which is not partitioned and not an index-organized table. Evaluate the following SQL statement: ALTER TABLE emp DROP COLUMN first_name; Which two statements are true regarding the above command? (Choose two.)

EMP		
Name	Null?	Type
EMPNO	NOT NULL	NUMBER (4)
FIRST_NAME		VARCHAR2 (20)
LAST_NAME		VARCHAR2 (20)
SALARY		NUMBER (10, 2)
DEPTNO		NUMBER (2)

- A.The FIRST_NAME column would be dropped provided it does not contain any data.
B.The FIRST_NAME column would be dropped provided at least one or more columns remain in the table.
C.The FIRST_NAME column can be rolled back provided the SET UNUSED option is added to the above SQL statement.
D.The FIRST_NAME column can be dropped even if it is part of a composite PRIMARY KEY provided the CASCADE option is used.

Answer:B D

5.Evaluate the CREATE TABLE statement: CREATE TABLE products (product_id NUMBER(6) CONSTRAINT prod_id_pk PRIMARY KEY, product_name VARCHAR2(15)); Which statement is true regarding the PROD_ID_PK constraint?

- A.It would be created only if a unique index is manually created first.
B.It would be created and would use an automatically created unique index.
C.It would be created and would use an automatically created nonunique index.
D.It would be created and remains in a disabled state because no index is specified in the command.

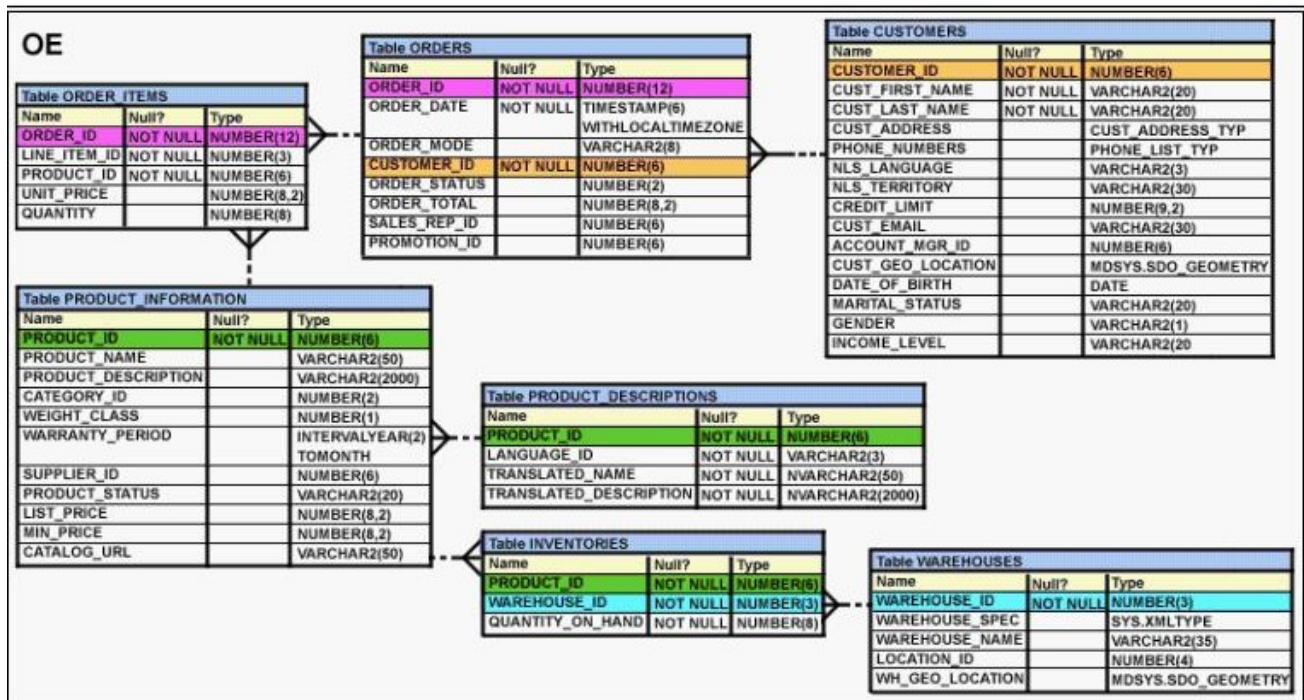
Answer:B

6.Which two statements are true? (Choose two.)

- A.The USER_SYNONYMS view can provide information about private synonyms.
B.The user SYSTEM owns all the base tables and user-accessible views of the data dictionary.
C.All the dynamic performance views prefixed with V\$ are accessible to all the database users.
D.The USER_OBJECTS view can provide information about the tables and views created by the user only.
E.DICTIONARY is a view that contains the names of all the data dictionary views that the user can access.

Answer:A E

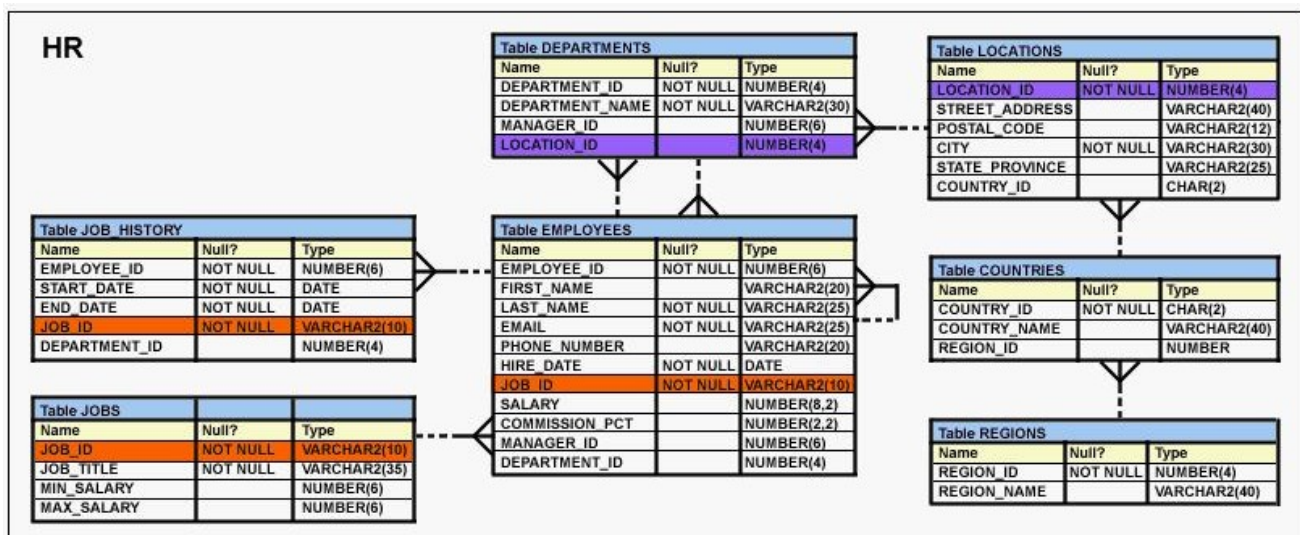
7.View the Exhibit and examine the description of the ORDERS table. Which two WHERE clause conditions demonstrate the correct usage of conversion functions? (Choose two.)



- A. WHERE order_date > TO_DATE('JUL 10 2006','MON DD YYYY')
- B. WHERE TO_CHAR(order_date,'MON DD YYYY') = 'JAN 20 2003'
- C. WHERE order_date > TO_CHAR(ADD_MONTHS(SYSDATE,6),'MON DD YYYY')
- D. WHERE order_date IN (TO_DATE('Oct 21 2003','Mon DD YYYY'), TO_CHAR('NOV 21 2003','Mon DD YYYY'))

Answer:A B

8. View the Exhibit and examine the description of the EMPLOYEES table. Your company decided to give a monthly bonus of \$50 to all the employees who have completed five years in the company. The following statement is written to display the LAST_NAME, DEPARTMENT_ID, and the total annual salary: SELECT last_name, department_id, salary+50*12 "Annual Compensation" FROM employees WHERE MONTHS_BETWEEN(SYSDATE, hire_date)/12 >= 5; When you execute the statement, the "Annual Compensation" is not computed correctly. What changes would you make to the query to calculate the annual compensation correctly?



A. Change the SELECT clause to SELECT last_name, department_id, salary*12+50 "Annual Compensation".

B. Change the SELECT clause to SELECT last_name, department_id, salary+(50*12) "Annual Compensation".

C. Change the SELECT clause to SELECT last_name, department_id, (salary+50)*12 "Annual Compensation".

D. Change the SELECT clause to SELECT last_name, department_id, (salary*12)+50 "Annual Compensation".

Answer: C

9. Evaluate the following CREATE SEQUENCE statement: CREATE SEQUENCE seq1 START WITH 100 INCREMENT BY 10 MAXVALUE 200 CYCLE NOCACHE; The sequence SEQ1 has generated numbers up to the maximum limit of 200. You issue the following SQL statement: SELECT seq1.nextval FROM dual; What is displayed by the SELECT statement?

A. 1

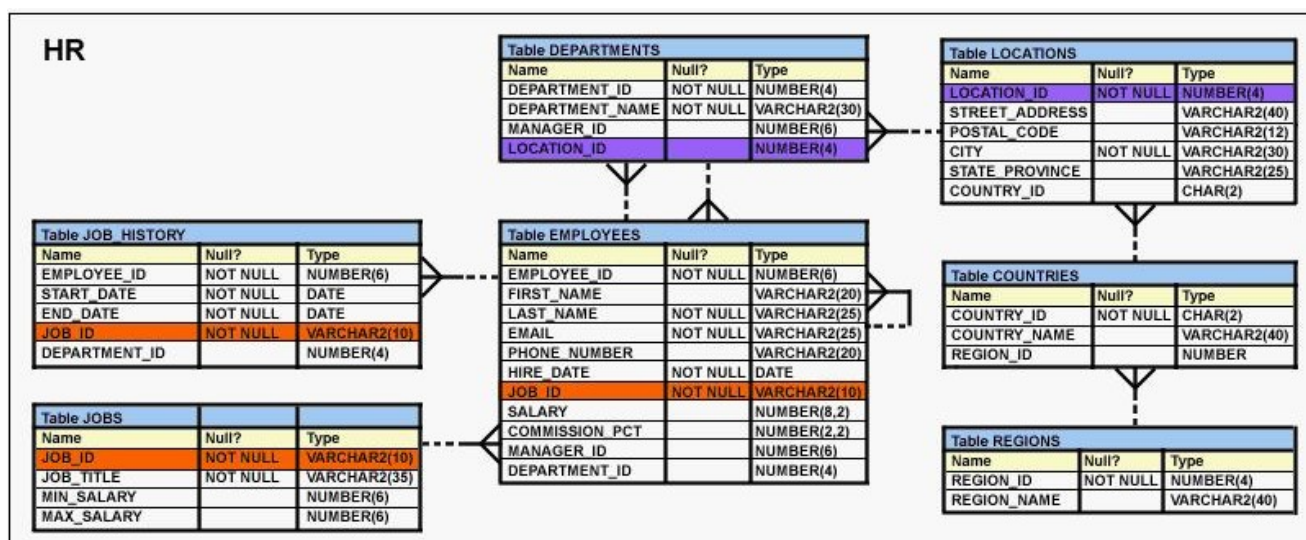
B. 10

C. 100

D. an error

Answer: A

10. View the Exhibit and examine the description of the EMPLOYEES table. You want to display the EMPLOYEE_ID, FIRST_NAME, and DEPARTMENT_ID for all the employees who work in the same department and have the same manager as that of the employee having EMPLOYEE_ID 104. To accomplish the task, you execute the following SQL statement: SELECT employee_id, first_name, department_id FROM employees WHERE (manager_id, department_id) =(SELECT department_id, manager_id FROM employees WHERE employee_id = 104) AND employee_id <> 104; When you execute the statement it does not produce the desired output. What is the reason for this?



A. The WHERE clause condition in the main query is using the = comparison operator, instead of EXISTS.

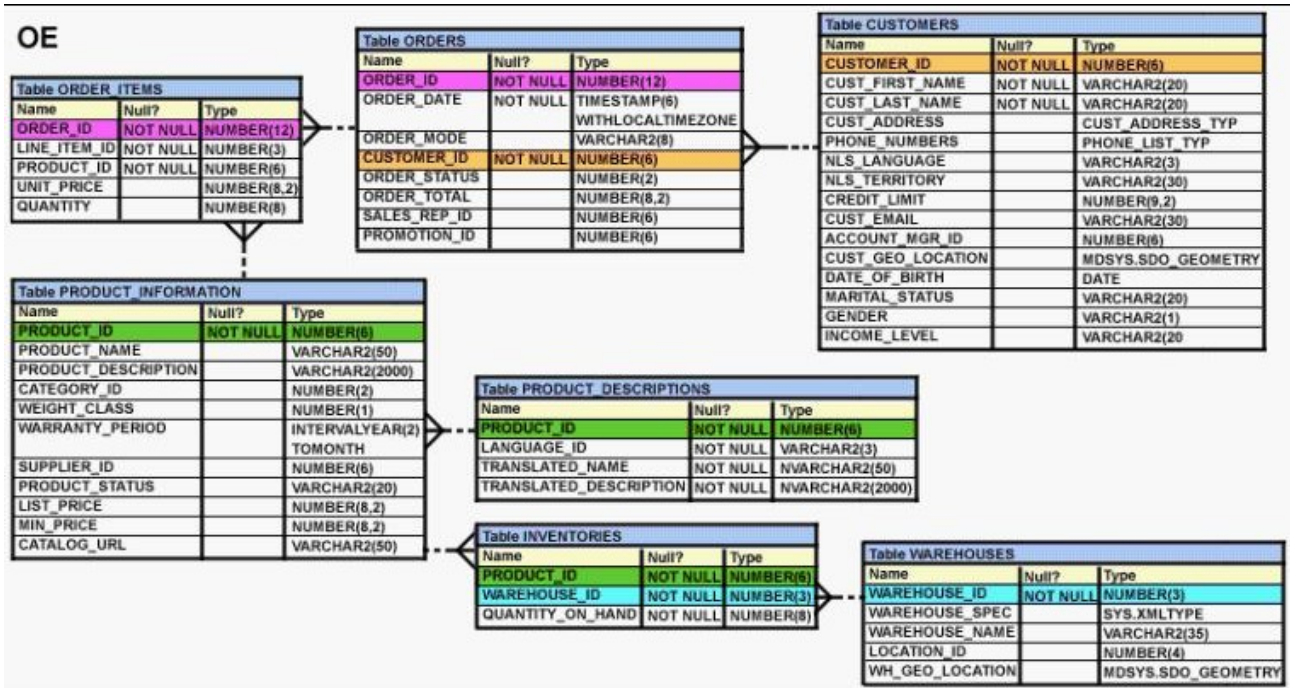
B. The WHERE clause condition in the main query is using the = comparison operator, instead of the IN operator.

C.The WHERE clause condition in the main query is using the = comparison operator, instead of the = ANY operator.

D.The columns in the WHERE clause condition of the main query and the columns selected in the subquery should be in the same order.

Answer:D

11.View the Exhibit and examine the descriptions of ORDER_ITEMS and ORDERS tables. You want to display the CUSTOMER_ID, PRODUCT_ID, and total (UNIT_PRICE multiplied by QUANTITY) for the order placed. You also want to display the subtotals for a CUSTOMER_ID as well as for a PRODUCT_ID for the last six months. Which SQL statement would you execute to get the desired output?



A.SELECT o.customer_id, oi.product_id, SUM(oi.unit_price*oi.quantity) "Total" FROM order_items oi JOIN orders o ON oi.order_id=o.order_id GROUP BY ROLLUP (o.customer_id,oi.product_id) WHERE MONTHS_BETWEEN(order_date, SYSDATE) <= 6;

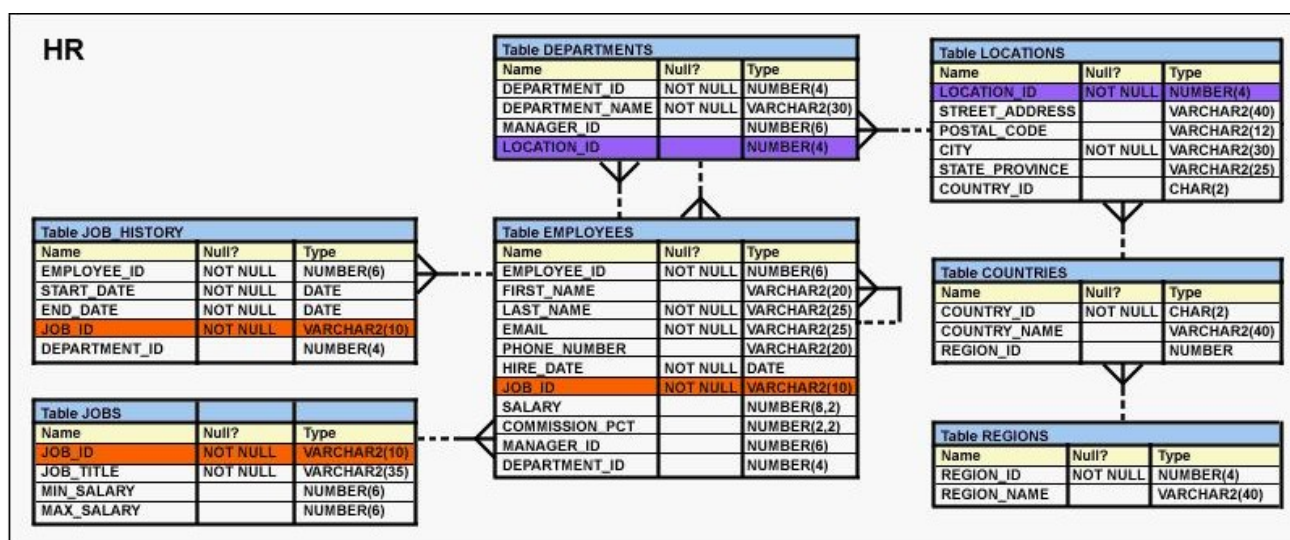
B.SELECT o.customer_id, oi.product_id, SUM(oi.unit_price*oi.quantity) "Total" FROM order_items oi JOIN orders o ON oi.order_id=o.order_id GROUP BY ROLLUP (o.customer_id,oi.product_id) HAVING MONTHS_BETWEEN(order_date, SYSDATE) <= 6;

C.SELECT o.customer_id, oi.product_id, SUM(oi.unit_price*oi.quantity) "Total" FROM order_items oi JOIN orders o ON oi.order_id=o.order_id GROUP BY ROLLUP (o.customer_id, oi.product_id) WHERE MONTHS_BETWEEN(order_date, SYSDATE) >= 6;

D.SELECT o.customer_id, oi.product_id, SUM(oi.unit_price*oi.quantity) "Total" FROM order_items oi JOIN orders o ON oi.order_id=o.order_id WHERE MONTHS_BETWEEN(order_date, SYSDATE) <= 6 GROUP BY ROLLUP (o.customer_id, oi.product_id) ;

Answer:D

12.View the Exhibit and examine the structure of the EMPLOYEES table. You want to retrieve hierarchical data of the employees using the top-down hierarchy. Which SQL clause would let you choose the direction to walk through the hierarchy tree?



- A.WHERE
- B.HAVING
- C.GROUP BY
- D.START WITH
- E.CONNECT BY PRIOR

Answer:E

13.Which two statements are true regarding the execution of the correlated subqueries? (Choose two.)

- A.The nested query executes after the outer query returns the row.
- B.The nested query executes first and then the outer query executes.
- C.The outer query executes only once for the result returned by the inner query.
- D.Each row returned by the outer query is evaluated for the results returned by the inner query.

Answer:A D

14.OE and SCOTT are the users in the database. The ORDERS table is owned by OE. Evaluate the statements issued by the DBA in the following sequence: CREATE ROLE r1; GRANT SELECT, INSERT ON oe.orders TO r1; GRANT r1 TO scott; GRANT SELECT ON oe.orders TO scott; REVOKE SELECT ON oe.orders FROM scott; What would be the outcome after executing the statements?

- A.SCOTT would be able to query the OE.ORDERS table.
- B.SCOTT would not be able to query the OE.ORDERS table.
- C.The REVOKE statement would remove the SELECT privilege from SCOTT as well as from the role R1.
- D.The REVOKE statement would give an error because the SELECT privilege has been granted to the role R1.

Answer:A

15.Evaluate the following SQL statement: ALTER TABLE hr.emp SET UNUSED (mgr_id); Which statement is true regarding the effect of the above SQL statement?

- A.Any synonym existing on the EMP table would have to be re-created.
- B.Any constraints defined on the MGR_ID column would be removed by the above command.
- C.Any views created on the EMP table that include the MGR_ID column would have to be dropped and re-created.
- D.Any index created on the MGR_ID column would continue to exist until the DROP UNUSED COLUMNS command is executed.

Answer:B

16.EMPDET is an external table containing the columns EMPNO and ENAME. Which command would work in relation to the EMPDET table?

- A.UPDATE empdet SET ename = 'Amit' WHERE empno = 1234;
- B.DELETE FROM empdet WHERE ename LIKE 'J%';
- C.CREATE VIEW empvu AS SELECT * FROM empdept;
- D.CREATE INDEX empdet_idx ON empdet(empno);

Answer:C

17.View the Exhibit and examine the structure of the MARKS_DETAILS and MARKS tables. Which is the best method to load data from the MARKS_DETAILStable to the MARKStable?

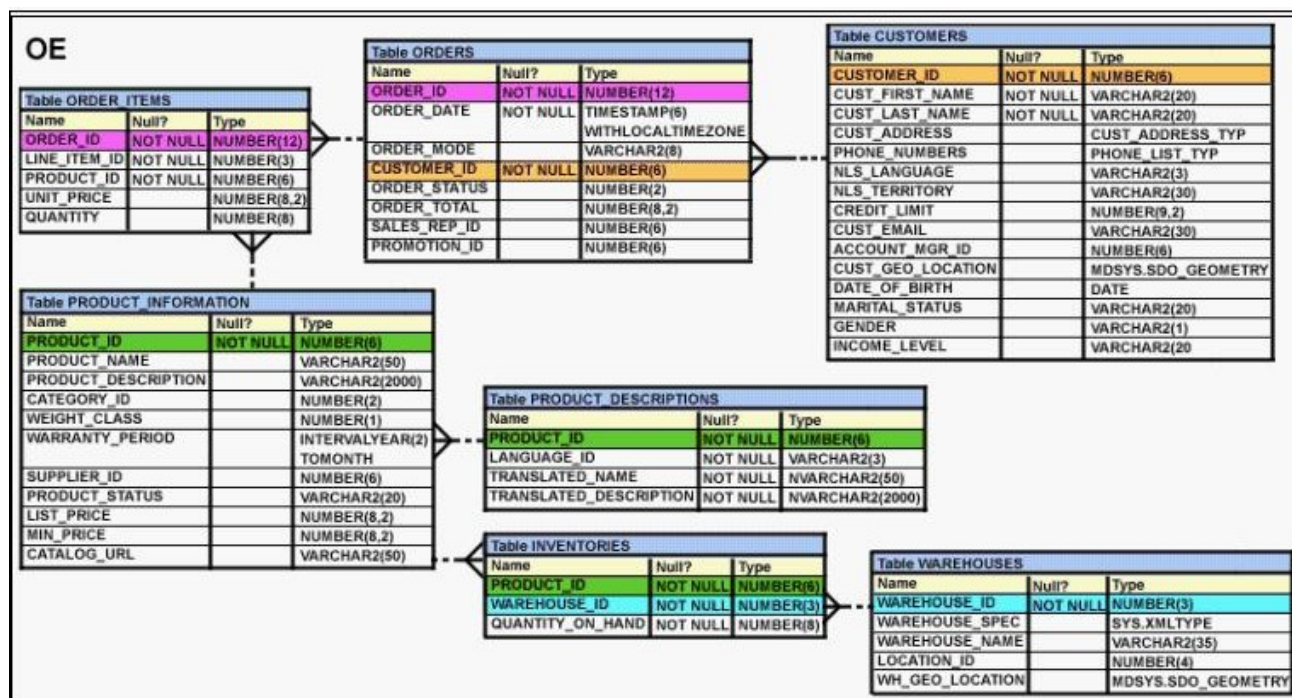
MARKS_DETAILS		
Name	Null?	Type
STUDENT_ID	NOT NULL	NUMBER (4)
SUBJECT_ID		NUMBER (2)
MARKS_ENGLISH		NUMBER (3)
SUBJECT_ID		NUMBER (2)
MARKS_MATH		NUMBER (3)
SUBJECT_ID		NUMBER (2)
MARKS_PHYSICS		NUMBER (3)
SUBJECT_ID		NUMBER (2)
MARKS_CHEMISTRY		NUMBER (3)
SUBJECT_ID		NUMBER (2)
MARKS_BIOLOGY		NUMBER (3)

MARKS		
Name	Null?	Type
STUDENT_ID	NOT NULL	NUMBER (4)
SUBJECT_ID		NUMBER (2)
MARKS		NUMBER (3)

- A.Pivoting INSERT
- B.Unconditional INSERT
- C.Conditional ALL INSERT
- D.Conditional FIRST INSERT

Answer:A

18.View the Exhibit and examine the data in ORDERS and ORDER_ITEMS tables. You need to create a view that displays the ORDER ID, ORDER_DATE, and the total number of items in each order. Which CREATE VIEW statement would create the view successfully?



A.CREATE OR REPLACE VIEW ord_vu (order_id,order_date) AS SELECT o.order_id, o.order_date, COUNT(i.line_item_id) "NO OF ITEMS" FROM orders o JOIN order_items i ON (o.order_id = i.order_id) GROUP BY o.order_id,o.order_date;

B.CREATE OR REPLACE VIEW ord_vu AS SELECT o.order_id, o.order_date, COUNT(i.line_item_id) "NO OF ITEMS" FROM orders o JOIN order_items i ON (o.order_id = i.order_id) GROUP BY o.order_id,o.order_date;

C.CREATE OR REPLACE VIEW ord_vu AS SELECT o.order_id, o.order_date, COUNT(i.line_item_id) FROM orders o JOIN order_items i ON (o.order_id = i.order_id) GROUP BY o.order_id,o.order_date;

D.CREATE OR REPLACE VIEW ord_vu AS SELECT o.order_id, o.order_date, COUNT(i.line_item_id)||' NO OF ITEMS' FROM orders o JOIN order_items i ON (o.order_id = i.order_id) GROUP BY o.order_id,o.order_date WITH CHECK OPTION;

Answer:B

19.View the Exhibit and examine PRODUCTS and ORDER_ITEMS tables. You executed the following query to display PRODUCT_NAME and the number of times the product has been ordered: SELECT p.product_name, i.item_cnt FROM (SELECT product_id, COUNT (*) item_cnt FROM order_items GROUP BY product_id) i RIGHT OUTER JOIN products p ON i.product_id = p.product_id; What would happen when the above statement is executed?

PRODUCTS	
PRODUCT ID	PRODUCT NAME
1	Inkjet C/8/HQ
2	CPU D300
3	HD 8GB /I
4	HD 12GB /R

ORDER ITEMS			
ORDER ID	PRODUCT ID	QTY	UNIT PRICE
11	1	10	100
22	2	15	120
33	3	10	50
44	1	5	10
66	2	20	125

- A. The statement would execute successfully to produce the required output.
 B. The statement would not execute because inline views and outer joins cannot be used together.
 C. The statement would not execute because the ITEM_CNT alias cannot be displayed in the outer query.
 D. The statement would not execute because the GROUP BY clause cannot be used in the inline view.

Answer:A

20. In which scenario would you use the ROLLUP operator for expression or columns within a GROUP BY clause?

- A. to find the groups forming the subtotal in a row
 B. to create group-wise grand totals for the groups specified within a GROUP BY clause
 C. to create a grouping for expressions or columns specified within a GROUP BY clause in one direction, from right to left for calculating the subtotals
 D. to create a grouping for expressions or columns specified within a GROUP BY clause in all possible directions, which is cross-tabular report for calculating the subtotals

Answer:C